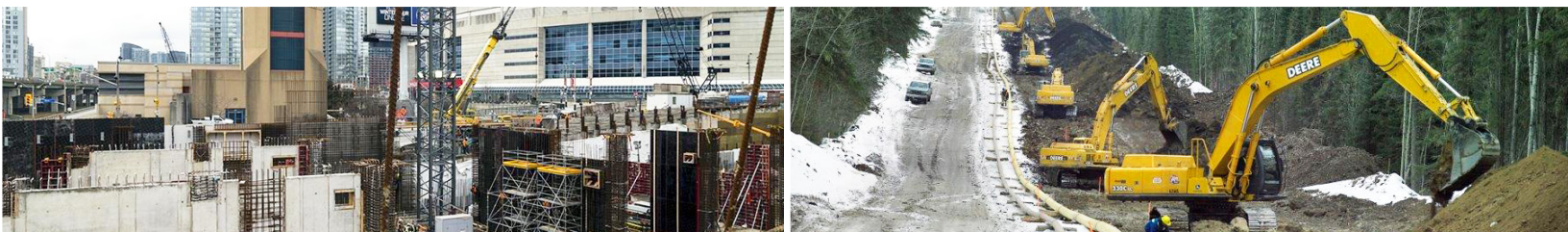




Construction Claims & Dispute Resolution

SCHEDULE DELAY & DISRUPTION
CUMULATIVE IMPACT OF CHANGE
LOSS OF PRODUCTIVITY





Construction Claims and Dispute Resolution

Construction claims or disputes occur when one party believes it is damaged by another party and demands its contractual rights by seeking entitlement to an extension of contract time or compensation.

Whenever unforeseen or changed conditions, circumstances and events occur on a construction project, it affects the flow of construction moving forward and consequently, the duration and cost to complete the work. Factors such as scope change, additional work, schedule delay, activity re-sequencing, the lack of performance or on-site coordination, design errors and omissions, are all representative of potential contributing impacts that can prevent a project from proceeding 'as planned' and per the original schedule or budget.

Based on an understanding of the principles that govern a construction project, Envista appreciates the challenges and risks that can impact and prevent the efficient and effective progression of the work. Our construction claims team facilitates the claims process by establishing 'cause and effect' relationships and the allocation of responsibility, supported by demonstrated entitlement.

A claim should clearly demonstrate how a party was damaged and why an extension of time or additional cost was incurred as a result.

Critical Elements of a Claim:

- **CAUSE** - Establish and substantiate the occurrence that has given rise to the claim
- **EFFECT** - Link and demonstrate the affects or impacts of the 'cause'
- **ENTITLEMENT** - Determine and substantiate the claiming party's contractual right to compensation
- **SUBSTANTIATION** - Validation through the use of project records, the contract and other supporting documentation

WHO WE CAN HELP

- Owners & Developers
- General Contractors
- Subcontractors
- Construction Management
- Project Management
- Legal Counsel
- Sureties
- Insurers & Adjusters

Our experience includes providing services to public and private sectors on various types of projects - Industrial, Commercial, Institutional, Transportation





OUR PEOPLE MAKE THE DIFFERENCE

There is no one-size-fits-all formula. Distinct and unique elements exist within each project that need to be recognized. Claims not only require an independent analysis of contributing factors and the use of fundamental methodologies, but often some 'out of the box' thinking to demonstrate and support the extent of damages incurred.

Our claims experts have the extensive experience and skills to analyze the conditions and circumstances that have impacted construction, and the resultant effect on a schedule and productivity. This is done through the careful application of schedule logic, critical path analysis, labour and equipment expenditures analysis, earned value assessments and forensic document review.

Our construction claims team has earned the trust and respect of clients through proven efforts and their ability to understand the complexity and interdependency of construction elements.

We also draw on the expertise of other in-house forensic engineers in disciplines such as civil, structural, geotechnical, electrical and mechanical to evaluate potential technical impacts, when necessary.

KEY STRENGTHS

- Facilitation of the Claims & Dispute Resolution Process
- Understanding and assessing the Impact of Unforeseen conditions and events - "Unknowns"
- Establishing "Cause and Effect" Relationships & Determining Liability
- Scheduling Software Expertise & Forensic Analysis Techniques
- Providing Independent, Credible and Supported Findings
- Knowledge of Project Controls Methodology & Project Management Principles
- Providing Clients with the Strategic Feedback To Make Informed Decisions

OUR SERVICES

- Claim Preparation & Evaluations
- Schedule Delay & Impact Analysis
- Schedule Preparation & Updates
- Critical Path Method (CPM)
- Loss of Productivity Assessments
- Impact of Change Analysis
- Forensic Cost Analysis
- Performance Trend and Earned Value Assessments
- Risk Mitigation & Managing Change
- Project Monitoring
- Quantification of Damages
- Expert Reports & Testimony
- Project Advisory



 **PRACTICE
LEADER**



Doris Marshall, CEC
+1.647.484.9483

doris.marshall@envistaforensics.com

For over 25 years, Envista Forensics has been at the forefront of servicing the insurance industry, legal professionals and corporations, successfully helping clients understand the cause of loss and determining responsibility following all types of equipment failures.

With extensive operations across North America, Latin America, EMEA and Asia-Pacific, Envista Forensics is uniquely positioned to deliver scientific expertise and court presentation experience to their clients, no matter where in the world these services are required.



ENVISTAFORENSICS.COM | 888.782.3473