



SERVICES AND CAPABILITIES

ENVISTA
FORENSICS

PROVIDING CERTAINTY IN AN UNCERTAIN WORLD

Envista Forensics is the global leader in providing full-service forensic consulting services. Our goal is to provide clients with certainty, when they need it most. Insurance claims and legal professionals trust our experts, engineers and consultants to provide multi-disciplinary analysis following any type of incident or disaster, no matter where in the world those services are needed.

WHAT WE DO

The Envista team is comprised of hundreds of experts and engineers from all backgrounds and various specialties to meet our clients' needs, from the most common requests such as fire investigation, structural failure analysis or building consulting, mechanical or electrical system analysis, product liability or digital forensics, to the rarer and more unusual cases that require a specialized expert. Our Expert Alliance network consists of specialists all over the *world* to assist with liability exposure, litigation support and subrogation needs for medium- to large-sized cases.



HOW WE'RE DIFFERENT

Our vision for Envista is, and has always been, to employ experts who truly care about their clients and the insureds they assist, who enjoy staying on top of current technology and industry trends, and who always possess the desire to push us forward.

For more than 30 years, I've been passionate about the field of forensic consulting and have felt a deep commitment and sense of responsibility for this type of work and the industries and clients it serves. Now, as the leader of Envista, it delights me to see a global team of experts and engineers devoted to providing elegant solutions. It is the people, our trusted advisors, who make Envista the world-class organization it is today.

We invest heavily in developing the most skilled staff in the industry, and are constantly exploring and investigating the newest technologies, looking for ways to create value by providing new and creative solutions to challenging technical issues. Embracing advances in technology is not only important for what we do, it is imperative.

Our people, processes and tools make us who we are. We strive to have expertise for any need that may arise, to teach and educate when and where we can, and provide the best service no matter where in the world it's needed.

Thank you for allowing us to be your trusted advisors, each and every day.



A handwritten signature in black ink that reads "Bob Wedoff".

Bob Wedoff
President, Envista Forensics

OUR GLOBAL LOCATIONS



CIVIL/STRUCTURAL



MECHANICAL



DIGITAL



FIRE



EQUIPMENT LOSS

TABLE OF CONTENTS

Envista In Action	6
Technology	8
Services	9
Civil/Structural	9
Electrical Analysis and Investigation	10
Mechanical Failure and Analysis	10
Digital Forensics and Cyber Security	11
Fire and Explosion Investigation	12
Equipment Loss Consulting	13
Practice Groups	14
Energy	14
Marine	15
Construction and Defect	16
Healthcare and Biosciences	17
Subrogation and Litigation Support	18
Expert Alliance	19



To submit an assignment, please visit envistaforensics.com

ENVISTA IN ACTION

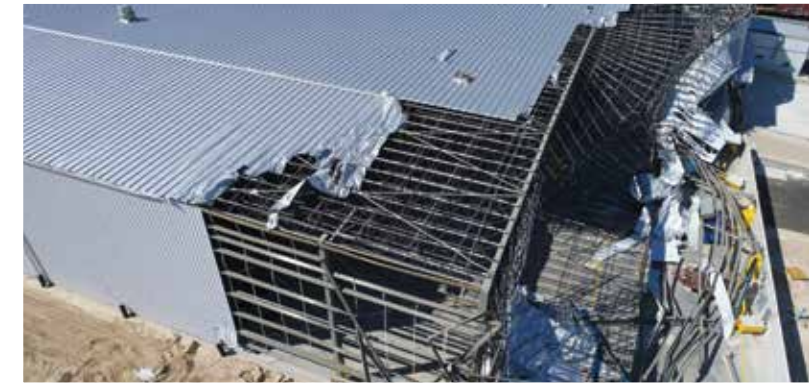
It's not uncommon for our clients to come to us with a loss that involves more than one discipline. In fact, we find that it happens all too often. And that's because of the complex nature of the matters that come through our doors. But for us, this multi-disciplinary approach is second nature, and it allows us to provide immediate help and response to insureds and clients alike, all while offering one, easy point of contact—the project manager—to lead the charge.

Take for example a major port and shipping hub in the southeast United States that experienced catastrophic wind and water damage following Hurricane Harvey in 2018. Envista was called on-scene to investigate more than 21 buildings, high-tech equipment and specialized cranes, which were integral to the port's operations. We were hired to help determine the extent of damage and cost of repairs. Total damages for this claim totaled approximately \$16M USD.



Highlights

- Our engineering team along with our building experts responded first.
- Later, AREPA, our equipment restoration division was engaged to work on the decontamination and restoration of computer equipment and servers (essentially, the heart and soul of the port's operation). These systems needed to get back up and running as soon as possible to not hinder the continuation of ship traffic.
- Our mechanical engineering team was retained to assess the cranes, and was able to assist in identifying the damaged components and limit the damages to under \$100K USD.
- Our civil engineering team worked with the port's identified contractor and were able to develop a repair plan, for one building in particular, that saved an estimated \$6M USD.



The joint efforts of our structural, mechanical, restoration and building teams were able to bring a large claim to an unprecedented closure efficiently, cost effectively, and within a quick timeframe.



TECHNOLOGY

When you choose a company or expert to help you with a case, it's because you believe they will offer you trusted solutions. And because of that, we take pride in our commitment to providing the very best—including the use of technological tools and enhancements for the benefit of our clients. We work to be a leader when it comes to developing trends in the market, because we know if we don't, we are doing a disservice to our clients.

That's why we make sure our forensics labs use the latest, state-of-the-art equipment. We utilize 3D imaging for onsite modeling. Our engineers work with forms of AI, UAV and virtual reality to provide the quickest and most accurate forms of analysis. Technology is at the heart and soul of our world, and honestly the world we live in today. We may have been around for 30 years, but our integrated and forward-thinking approach is what keeps propelling us into the future.



SERVICES

Civil/Structural

Envista's civil/structural engineering experts specialize in the investigation of complex structural failures. Our engineers and forensic experts come from various disciplines, and work to uncover, quickly and cost-effectively, the origin, cause and extent of incidents and failures. Our team has worked on some of the largest structure failures across the globe, as well as some of the most devastating disasters our clients have handled.



Construction and Defect

Along with our structural engineers, our multi-disciplinary experts can help answer questions regarding building materials, structural design, concrete corrosion, ground surveys and more after incidents, accidents or storms. *More on page 16.*



Geo-Technical Engineering

Structural damage is often related to soil conditions, and those claims need an experienced civil engineer with geo-technical and structural experience. Our engineers and geologists can help determine the underlying cause of the damage, and what could have contributed to the soil failure. We assess and test soil samples to find underlying causes, and then analyze how that impacted the structure. Our team presents to clients in the clearest and most concise manner to explain our scientific process as well as the failure analysis.



Building Consulting

Our dedicated team of experts can assist clients on claims involving cost estimating for scope development, clerk-of-the-works projects, damage evaluation or bid comparisons; construction resolution for scope, costs, repair vs. replace and even assist with contractor or warranty negotiations. Our experts can also help with appraisal services.

Our team is equipped to handle structure defect analysis, impact assessments following incidents or accidents, and CAT response.

Our full list of services includes:

- Building consulting
- Civil engineering
- Concrete damage assessment
- Construction and defect
- Drone/UAS investigations
- Infrastructure failure
- Soil/geo-technical engineering
- Storm damage
- Structural failure analysis

Electrical Analysis and Investigation

When incidents or failures to critical electrical systems, equipment or components occur, you need a skilled expert to assess the damage, determine possible cause, and provide mitigation options so recovery occurs quickly and cost-effectively.

Our engineers and experts are skilled in the areas of:

- Electrical accident investigation
- Electrical failure analysis
- Electronics and electrical systems investigation
- Equipment failure/breakdown and loss consulting

Common assessments for our licensed electrical engineers and master electricians include:

- Electrical systems and wiring analysis
- Power surge or power quality assessments
- Smart home and IoT device evaluations



Mechanical Failure Analysis

Envista’s forensic engineers and experts use a structured, scientific approach in their investigation of mechanical failures to determine the origin and cause—identifying the factors that contributed to the failure—who may be responsible, as well as the necessary steps to mitigate the issue.

Our licensed mechanical, metallurgical, materials engineers and equipment experts have the experience to quickly and effectively diagnose problems and determine appropriate next steps.

Envista has conducted analysis in many areas, including:

- Elevators and escalators
- Fire suppression systems
- Heavy equipment
- HVAC and boiler systems
- Manufacturing, industrial and food processing plants
- Material failure
- Pipe ruptures
- Plumbing and complex MEP systems
- Product design
- Refineries and petrochemical processing
- Rotating machinery
- Vehicle accidents



Digital Forensics and Cyber Security

We live in an extremely digital world, and with that comes a number of risks. From cyber hacks, to cell phone GPS tracking, to infotainment system liability risks, the obsession with connectivity has created a need for specialized expertise. Envista’s authorities are some of the most well-known in the world, and have worked on some of the most infamous criminal cases, as well as numerous highly sensitive, complex data and cyber breaches.

Our experts can help attorneys, companies and adjusters determine the truth by using our advanced technology and state-of-the-art lab equipment.



Digital Forensics

With technology advancing every day, the type of data that can be retrieved is constantly increasing. This technology heavily contributes to why law enforcement and legal professionals now consider digital forensics a viable means for obtaining important evidence related to criminal and legal investigations.

Our digital forensics team consists of experts in:

- GPS forensics
- Infotainment and telematics
- Mobile phone forensics
- Mobile phone technology/tracking
- Video surveillance systems

Cyber Security

After a cyber-incident occurs, many questions need to be answered. Our experts can assist by performing a forensic examination to determine if an attack did in fact occur. If one did occur, we can determine what methods the attacker used and what security vulnerabilities were exploited. We help to determine the extent and severity of a breach, what sensitive data records may have been exposed, and what physical damage may have occurred due to cyber vandalism.

Our cyber security services include:

- Computer forensics
- Cyber incident investigations
- Data breach analysis
- Forensic data acquisition
- Ransomware identification

Fire and Explosion Investigation

Large fire and explosion losses, in particular, pose a number of challenges. That's when years of experience, access to numerous experts that can arrive on-scene quickly, and the knowledge to manage extremely high levels of evidence is most vital. All of our experts are highly experienced, with at least 20 years in the industry, and can provide expert court witness testimony for any issue.

Our multi-disciplinary team has worked massive origin and cause investigations, from multi-million dollar cases to \$500M cases, from manufacturing facilities, to warehouses, power production, refineries and more. From loss of life to loss of business, we've been there for our clients and *their* clients to help them through the worst of times.

International Capabilities

Our experts have worked with companies around the world, including some of the most well-known Fortune 500 companies. We've conducted investigations for the U.S. Navy, and led investigations for two of the largest wildfires documented in the western hemisphere. We've been to Columbia, to Haiti, to Croatia. We've traveled from Georgia to France, from St. John to the UK. We are here to assist with cases no matter where in the world those services are needed.



Our multi-disciplinary team handles fire and explosion investigations involving:

- Correctional facilities
- Energy (power production/refineries)
- Healthcare
- Heavy machinery/equipment
- Manufacturing
- Marine
- Multi-occupancy residential
- Product liability
- Warehousing
- Wildland

Service features we offer include:

- Drone documentation
- Evidence handling
- Fire and explosion complex scene management
- Fire spread identification
- Fraud investigation
- Subrogation identification
- 3D scene image documentation

Equipment Loss Consulting

Property damage claims involving technical equipment can be catastrophic for policyholders and extremely complicated for insurers to navigate. The equipment loss engineers and consultants at Envista Forensics are industry leaders with more than 30 years of experience providing comprehensive post-loss assessments that enable claim expenses to be reduced and business interruption to be minimized.

Our equipment loss experts determine the scope and extent of the damage, verify the cause, and then provide reinstatement cost estimates. Our specialists can help with vendor coordination and warranty options, and have extensive experience serving as expert witnesses.

Our areas of equipment expertise include:

- Agricultural
- Energy
- Food processing
- Healthcare/biosciences
- Heavy machinery/equipment
- Information systems
- IT/computer hardware
- Manufacturing
- Marine
- Printing
- Pulp and paper
- Semiconductor
- Telecommunications
- Transportation



Energy

From power generation and petrochemical processing, to offshore and renewable, energy systems across the globe keep businesses running. Our skilled energy experts and engineers have specialized knowledge and experience responding to failures involving business critical components such as turbines, pressure vessels, generators, control systems, boilers and switchgear.



We investigate all types of equipment and facilities damage, especially those related to:

- **Power generation and distribution** – Our global experience spans design, installation, operations and maintenance for all types of power generation plants and facilities.
- **Petrochemical** – With experts in the operation and design of refineries, as well as pipelines and storage terminals, we handle all aspects of the oil and gas market for cause, cost and downtime solutions. We answer our clients' questions regarding corrosion, process, execution plans, schedules and an array of other facets in the industry. We strive to provide the best technical expertise for the widest range of solutions.
- **Offshore** – Our experts are skilled in all aspects of drilling, exploration and production of rigs, fracking, deep water, offshore platforms and ancillary equipment and have consulted for some of the largest producers in the world.
- **Renewable** – From solar panels to wind, to geothermal or biofuel, we have experts in all corners of the world, including industry-leading providers of damage assessment, failure analysis, origin and cause, and reinstatement viability.



Marine

Envista's Marine experts provide complete global solutions for in-depth technical investigation of multi-disciplinary, complex claims occurring on land and sea, and across all marine business lines. Our marine team, comprised of diversified experts and engineers (many of whom are licensed mariners), have aided claims adjusters, legal professionals, safety and risk managers and brokers with mitigating all types of claims related to the global transportation system.

Our marine expertise can assist with claims related to:

- Accident reconstruction
- Cargo
- Corrosion and coating defect analysis
- Cyber
- Docks and marinas
- Electronics
- Environmental
- Equipment loss mitigation
- Fires and explosions
- Fuel and oil analysis
- Heavy equipment accidents
- Hull and machinery
- Inland marine
- Marine accidents
- Port facilities
- Structural collapses
- Subsea assessment or installation survey
- Telecommunications equipment
- Vessel structural damage or failure

Construction and Defect

Envista's experts have backgrounds in all facets of construction and engineering to properly analyze any incident. We pride ourselves on our ability to get to a site quickly, conduct a thorough site inspection and assemble the necessary multi-disciplinary team to manage the request.



Relevant Experts

- Experts are assigned based on your claim and needs, not on your geography—even if it's an entire team of diverse experts.
- Your expert will provide support throughout litigation including extensive experience as an expert witness.
- We provide an impartial presentation of the facts.

Incidents

- Environmental or civil disaster
- Improper design
- Landslide or mudslide
- Premises liability/ construction site or workplace accident
- Utility accident
- Workmanship

Our structural experts offer a variety of services:

- ADA compliance
- Architectural design review and analysis
- Building envelope analysis
- Code compliance assessment (all disciplines)
- Damage assessment or evaluation
- Drone investigation
- Errors and omissions/ design deficiencies
- Geotechnical evaluation
- Material defect/ metallurgical analysis
- MEP building systems
- Origin and cause
- Utility system evaluation
- Verification of plans or specifications



Builder's Risk

When construction projects go awry due to accidents, incidents or even weather-related events, our team of engineers can quickly assess site conditions to determine the extent of damage, cause and liability, as well as help develop plans for recovery and assess repair/cost estimates. We work closely with our building consulting team to jumpstart recovery and minimize delays.

Whether it's equipment-related, a safety issue or accident, a mechanical or electrical failure, or civil/ structural failure, we have you covered.

Healthcare and Biosciences

Property claims involving medical and biosciences equipment, systems or facilities can have catastrophic effects and need to be handled quickly and appropriately, with highly-specialized and skilled experts and engineers. At Envista, our experts are trained to manage all aspects of a claim, from small to complex, providing an on-site team to assist with:

- Digital forensics for data centers, IT equipment or loss of PII/PHI
- Equipment consulting for radiology or imaging, treatment/therapy, analytical devices, biomedical equipment, SCADA systems, cleanrooms and more
- Building consulting, fire investigation, structural damage assessment, certified industrial hygienists and other investigative services to facilitate analysis for hospitals, medical centers, pharmaceutical or medical device manufacturing facilities, medical offices or even academic or institutional research laboratories or facilities

We offer an array of services including:

- Scope of damage and contamination assessment
- Failure or root cause analysis
- Vendor or manufacturer coordination
- Total project management
- Subrogation evaluation
- Reinstatement analysis to minimize business interruption
- Cost validations
- Origin and cause investigation
- Equipment restoration
To learn more about our equipment restoration, talk to a sales team member for information regarding our sister company, AREPA, or visit arepa.com.





PRACTICE GROUPS

Subrogation and Litigation Support

Envista helps liability claim and legal professionals quickly get to meaningful answers on the many technical issues at the center of a dispute. Our engineers have decades of experience working with both defendants and plaintiffs, and are able to recognize any issues or discoveries that should be tested and documented for potential recovery through subrogation.

Having the right technical expert can make or break your case. Experts need to know the technical topic well, understand the big picture, but also understand the smallest technical details, while being able to easily explain the findings. Envista consultants and engineers have just that.

At Envista, our experts have worked on a wide variety of cases and types of litigation including:

- Construction defect
- Personal injury
- Cyber incident investigations
- Premises liability
- Digital forensics
- Product liability
- Fire investigation
- Trucking/vehicle accidents
- Machine guarding

EXPERT ALLIANCE

Meeting Our Client's Unique Needs

Having access to the right expert, at the right time, in the right location takes an established, experienced network, and that is just what we have at Envista Forensics. In addition to our excellent full-time staff, our Expert Alliance was created to provide clients with a complete global forensics engineering solution covering a wide variety of technical and unique specialties. In brief, Envista can provide everything you need for those complex losses.

From the rarest, to the most unique of needs, from the most complex, to the most terrifying major catastrophes, our network of more than 500 additional experts and specialists are waiting to help you. All assignments are project managed by an Envista engineer whose focus is to deliver answers for your highly technical, and sometimes even strange, claims in a timely and cost effective manner.

Out of the Ordinary Needs, Matched with Extraordinary People

If you have a claim need, Envista's Expert Alliance has an expert for it:

- Aircraft
- Environmental sciences
- Rare art
- Beer, wine, spirits production and shipment/storage
- Firearms
- Toxicology
- Ceramics
- Handwriting, paper and ink analysis
- Zoology
- Cryogenics
- Industrial hygiene
- Wood, sand, fabrics, feathers...
- Entomology
- Mycology
- Railroad equipment

[Starting to get the picture?](#)

Expert Alliance in Action

Here are a few technical cases that illustrate the expertise that lies within this amazing network:

- Our Ceramics and Glass expert assisted with a Ballistic Grade Level 5 Clad Polycarbonate pane examining the integrity of the glass and rendered an opinion as to the cause of breakage.
- After a bug infestation in a lumber yard, our entomologist identified the type insect, how the infestation and migration of insects occurred and provided a pest control protocol to eliminate infestation.
- A facility had a cryogenic pipe rupture resulting in personal injuries. Our cryogenic expert was able to determine why the pipe ruptured and how to restore operations of the system.



Who is the Expert Alliance?

1. Envista can't be everywhere, so we use the Expert Alliance to augment the capabilities for local support.
2. We add the best of the best to enhance our already amazing team.
3. Our clients have needs that go beyond the regular scope of our practice areas.
4. All members of the Expert Alliance are known experts in their chosen fields, with most having senior-level and court testimony experience.



ENVISTAFORENSICS.COM