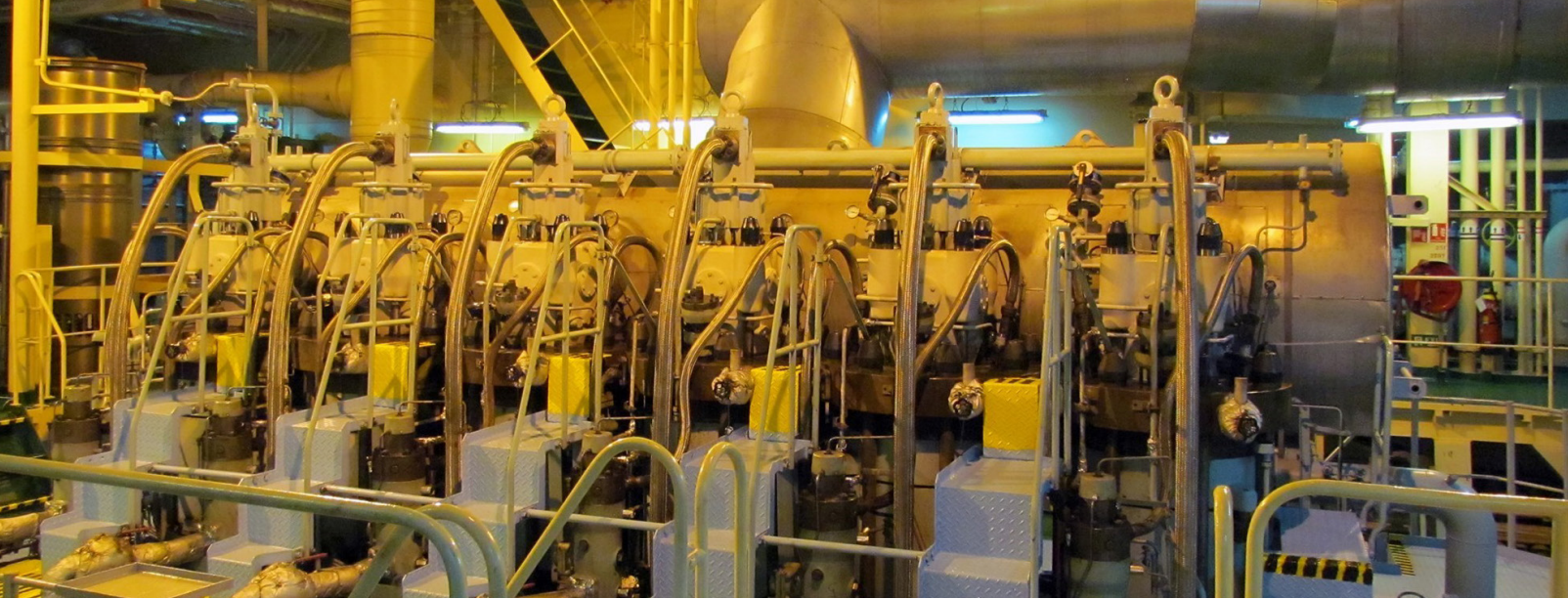




# GLOBAL MARINE CLAIMS

- Cargo
- Commercial Vessels
- Cruise & Small Passenger Vessels
- Inland Marine
- Ocean Marine
- Offshore Energy
- Port & Marina
- Yachts





## Handling Complex Marine Claims

We understand how quickly you need this information in order to effectively manage claim cost and client expectations, as well as the challenges you face to gain not only the right expert opinion in that shorter time frame, but also the appropriate path for failure or incident investigation.

If physical evidence and critical data has been missed, and the correct type of testing and technical analysis is not carried out, clients may be left exposed when determining policy coverage, claim quantum, and potential subrogation.

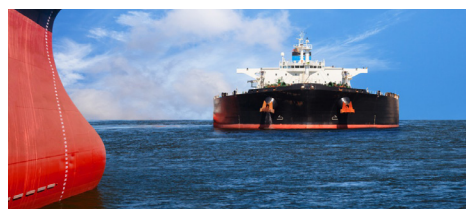
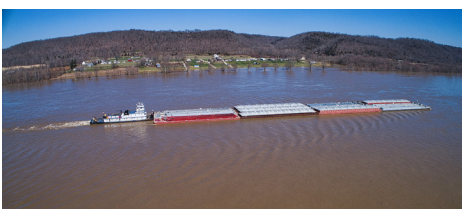
**With increasing engineering and electronic complexity across a global supply chain and ever greater scrutiny placed on management of the claim, you need to obtain a robust, substantiated opinion on the cause, the extent of damage, and the critical steps for minimizing loss.**

## ENVISTA'S WORLDWIDE CAPACITY OFFERS:

- » The ability to work one matter across land and sea, as one team, to meet client needs
- » Breadth and depth of subject matter experts that span numerous technical and scientific fields to truly deliver on multi-disciplinary, complex claims
- » A unique structure to opine on any marine business line, and provide answers in one comprehensive report

## KEY MARINE BUSINESS LINES / CLAIM TYPES

- » Cargo
- » Commercial Vessels
- » Cruise and Small Passenger Vessels
- » Inland Marine
- » Blue Water Ocean Marine
- » Brown Water Ocean Marine
- » Offshore Energy
- » Port and Marina
- » Yachts





---

## Service Offerings

- » Corrosion and Coating Defect Analysis
  - » Damage Assessments and Repair Plans
  - » Electronics Contamination Assessment
  - » Emergency Recovery Assessment of Mechanical/Electrical Equipment
  - » Engineering/Electrical Diagnostics and Failure Analysis
  - » Fire Origin and Cause
  - » Marine Pollution & Environmental Investigation
  - » Structural Failure Analysis and Material Testing
  - » Technology: 3D Site Documentation, Drone UAV, and Slip Resistance Testing
  - » Vessel Cargo Securing, Cargo Stowage, and Cargo Loss Exams
  - » Vessel Marine Casualty or Accident Investigation
  - » Vessel Stability and Structure Reviews
  - » Accident Reconstruction
  - » Shipyard/New Construction Vessel Defect and Liability
- 

### CONTACT US

e. [projects@envistaforensics.com](mailto:projects@envistaforensics.com)

p. +1 888-782-3473

[www.envistaforensics.com](http://www.envistaforensics.com)



## **Where You Need Us, When You Need Us**

For over 35 years, Envista Forensics has been at the forefront of servicing the insurance industry, legal professionals and corporations, successfully helping clients understand the cause of loss and determining responsibility following all types of equipment failures.

With extensive operations across North America, Latin America, EMEA, Singapore, and Australia, Envista Forensics is uniquely positioned to deliver scientific expertise and courtroom presentation experience to their clients, no matter where in the world these services are required.



[www.envistaforensics.com](http://www.envistaforensics.com)

+1 (888) 782-3473